



BEHAVIORDATA PSYCHODIAGNOSTIC

LABORATORY REPORT

Account: 002928

Subject: 51

Date: 02/17/09

Inventory: CPI™

Report: 00

Options: RE

Sex: Female

Age: 51

This report from Behaviordata Incorporated is based on the system that was designed by Joseph C. Finney, M.D., Ph.D., a psychiatrist and a clinical psychologist at the University of Kentucky, with the help of research grants from the National Institute of Mental Health and U.S. Vocational Rehabilitation Administration.

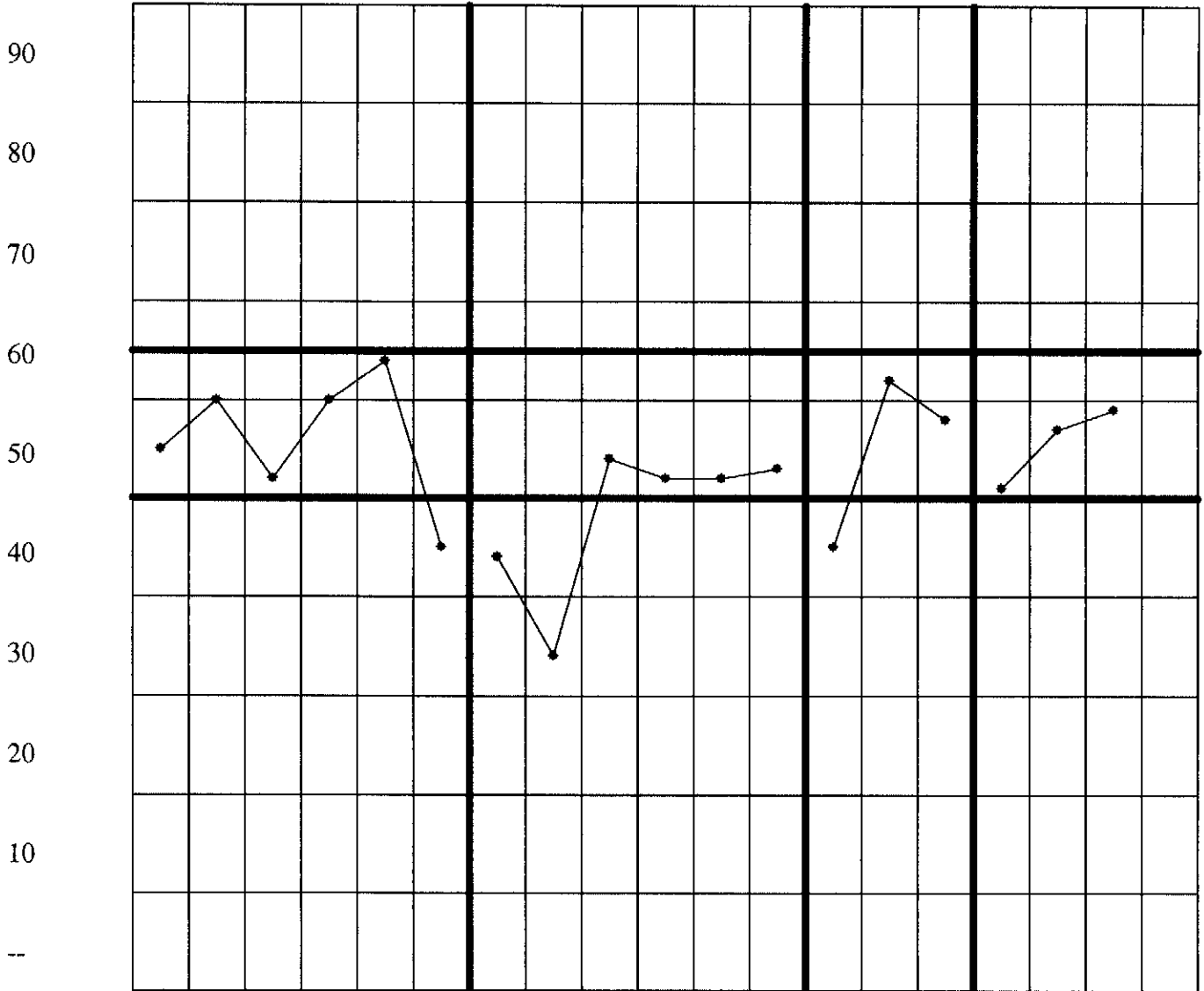
Analysis of this kind can be done from various psychological inventories or from other information. Like any other report based on an inventory, this is subject to error. No decision should be made from this report alone, but only from consideration of the case history and all the available evidence. In this case, the inventory completed and submitted for analysis was the California Psychological Inventory.

Behaviordata, Inc.
20833 Stevens Creek Blvd., Suite 100
Cupertino, CA 95014

www.behaviordata.com
Phone: (800) 627-2673
Fax: (408) 342-0617
E-mail: bdi@behaviordat.com

Account 002928 Subject 51 [Female,51]
CPI BASIC SCALES PROFILE

T--> Dom Cs Sy Sp Sa Wb Re So Scn To Gi Cm Ac Ai Ie Py Fx Fe Si
55 60 52 60 64 45 44 34 54 52 52 53 45 62 58 51 57 59 0
+++



The T-scores reported on this profile are true T scores normalized to the Finney sample of 2,000 normal men and women. The scores are corrected to reduce the factor of anxiety or social desirability, and the effects of response set for rare (possibly random) answers

Account 002928 Subject 51 [Female,51]

The following analysis is based on the University of Kentucky's Interpretive System developed by J. Finney, M.D., Ph.D., (JF) and distributed by Behaviordata, Inc.

Tests for Psychosis:

Criterion:	Psychotic	Indeterminate	Nonpsychotic
Meehl-Dahlstrom	*		
Taulbee-Sisson			*
ScK-Ptk Method		*	
Elevation of Sx			*
Two Point Code			*
Elevation of ScK			*
Goldberg Method		*	
Elevation of Pa			*
Finney Method			*
	---	---	---
	1	2	6

Psychotic Point Count = 4
(9+P) - N

Rankings of the eight MMPI Clinical Scales, with the formula corrections: (These MMPI scale scores have been derived from the corresponding CPI items.)

	TFAT	AT	FAT	T
Highest:	MaK-jf (9) = 66.5	MaK-jf (9) = 67.5	MaK-jf (9) = 67.6	MaK-jf (9) = 65.3
Second:	HsK-jf (1) = 62.3	ScK-jf (8) = 63.8	ScK-jf (8) = 64.4	HsK-jf (1) = 61.4
Third:	ScK-jf (8) = 60.8	HsK-jf (1) = 63.3	HsK-jf (1) = 63.2	Hy-jf (3) = 59.6
Fourth:	Hy-jf (3) = 59.5	PtK-jf (7) = 60.1	PtK-jf (7) = 60.1	ScK-jf (8) = 57.3
Fifth:	Pa-jf (6) = 57.3	Hy-jf (3) = 59.5	Hy-jf (3) = 59.4	Pa-jf (6) = 57.2
Sixth:	PtK-jf (7) = 57.1	Pa-jf (6) = 57.8	Pa-jf (6) = 57.5	PtK-jf (7) = 54.2
Seventh:	PdK-jf (4) = 53.5	PdK-jf (4) = 54.6	PdK-jf (4) = 54.3	PdK-jf (4) = 52.7
Lowest:	D-jf (2) = 51.7	D-jf (2) = 51.9	D-jf (2) = 51.9	D-jf (2) = 51.4
Two Pt. Codes:	(9,1)	(9,8)	(9,8)	(9,1)

Mis-mark and/or blank count: 0
 Addiction Band Number: 1 (High=5,Low=0)
 Alcoholism Band Number: 2 (High=5,Low=0)

Account 002928 Subject 51 [Female,51]

The raw scores for scales L-jf, F-jf, K-jf, Hs-jf, HsK-jf, D-jf, Hy-jf, Pd-jf, PdK-jf, Mfm-jf or Mff-jf, Pa-jf, Pt-jf, PtK-jf, Sc-jf, ScK-jf, Ma-jf, MaK-jf, and Si-jf reported on these Scale Information pages were obtained by changing the standard MMPI-2™ test raw scores by reducing the factor of anxiety or social desirability and the effects of response set for rare (possibly random) answers.

The T-scores for scales L-jf, F-jf, K-jf, Hs-jf, HsK-jf, D-jf, Hy-jf, Pd-jf, PdK-jf, Mfm-jf or Mff-jf, Pa-jf, Pt-jf, PtK-jf, Sc-jf, ScK-jf, Ma-jf, MaK-jf, and Si-jf reported on these Scale Information pages are not the standard MMPI-2™ test T-Scores. These are the scores normalized by the University of Kentucky's Interpretive System developed by J. Finney, M.D., Ph.D., on a sample of 2000 men and women.

* * * * *

Statements in this report are protected by
International Copyright 1974, 1996
by Joseph C. Finney.
All Rights are Reserved.

The simple T-scores given in the report are the true normalized scores developed by Joseph C. Finney, M.D., Ph.D., at the University of Kentucky. This is the only standardization of the MMPI and CPI that was sponsored by a research grant from the National Institute of Mental Health.

AT, FAT, and TFAT scores are computed to reduce effects of response sets correlated with the A factor and the F scale.

* * * * *

1-T	51-F	101-T	151-F	201-T	251-F	301-F	351-T	401-F	451-F
2-F	52-F	102-F	152-T	202-T	252-F	302-T	352-F	402-F	452-T
3-F	53-T	103-F	153-F	203-T	253-F	303-F	353-F	403-T	453-T
4-F	54-F	104-F	154-T	204-F	254-F	304-T	354-T	404-F	454-F
5-F	55-F	105-T	155-F	205-F	255-F	305-T	355-F	405-F	455-F
6-F	56-F	106-F	156-F	206-T	256-F	306-F	356-F	406-F	456-F
7-F	57-T	107-T	157-F	207-T	257-T	307-F	357-F	407-T	457-F
8-T	58-T	108-T	158-F	208-F	258-T	308-F	358-F	408-T	458-F
9-T	59-F	109-T	159-F	209-F	259-T	309-F	359-T	409-F	459-F
10-T	60-T	110-T	160-T	210-F	260-F	310-T	360-F	410-T	460-F
11-F	61-T	111-F	161-T	211-F	261-F	311-F	361-T	411-F	461-T
12-T	62-T	112-T	162-T	212-F	262-T	312-T	362-T	412-T	462-F
13-F	63-F	113-F	163-T	213-T	263-F	313-F	363-F	413-T	
14-F	64-F	114-F	164-F	214-F	264-F	314-F	364-F	414-T	
15-F	65-F	115-T	165-T	215-F	265-T	315-F	365-F	415-T	
16-F	66-T	116-T	166-F	216-T	266-F	316-T	366-F	416-T	
17-F	67-F	117-T	167-F	217-F	267-F	317-T	367-F	417-F	
18-F	68-F	118-F	168-F	218-F	268-T	318-T	368-T	418-F	
19-F	69-F	119-T	169-F	219-F	269-F	319-F	369-F	419-F	
20-F	70-T	120-F	170-T	220-F	270-F	320-F	370-F	420-F	
21-F	71-F	121-F	171-F	221-T	271-F	321-F	371-F	421-F	
22-F	72-T	122-T	172-F	222-T	272-F	322-T	372-F	422-F	
23-F	73-F	123-F	173-F	223-F	273-F	323-F	373-F	423-F	
24-T	74-T	124-F	174-F	224-T	274-T	324-F	374-F	424-T	
25-F	75-F	125-T	175-T	225-F	275-T	325-F	375-F	425-F	
26-F	76-T	126-T	176-F	226-F	276-T	326-F	376-T	426-T	
27-F	77-F	127-F	177-F	227-F	277-T	327-T	377-F	427-T	
28-F	78-F	128-F	178-F	228-T	278-F	328-T	378-F	428-T	
29-F	79-F	129-T	179-T	229-T	279-F	329-F	379-T	429-T	
30-T	80-T	130-T	180-T	230-F	280-T	330-F	380-T	430-T	
31-F	81-T	131-T	181-F	231-F	281-F	331-T	381-F	431-F	
32-F	82-F	132-T	182-F	232-T	282-F	332-F	382-T	432-T	
33-T	83-T	133-F	183-F	233-F	283-F	333-T	383-F	433-T	
34-T	84-F	134-F	184-F	234-F	284-F	334-F	384-F	434-F	
35-T	85-T	135-F	185-F	235-T	285-F	335-F	385-T	435-F	
36-F	86-F	136-F	186-T	236-T	286-F	336-T	386-F	436-F	
37-T	87-T	137-F	187-F	237-F	287-F	337-F	387-T	437-F	
38-F	88-F	138-T	188-F	238-T	288-F	338-F	388-T	438-F	
39-F	89-F	139-T	189-F	239-F	289-T	339-F	389-T	439-F	
40-T	90-T	140-T	190-F	240-T	290-F	340-F	390-F	440-T	
41-T	91-F	141-F	191-T	241-F	291-F	341-F	391-F	441-F	
42-T	92-F	142-T	192-F	242-T	292-T	342-F	392-T	442-F	
43-F	93-F	143-F	193-T	243-F	293-F	343-T	393-T	443-T	
44-F	94-F	144-F	194-F	244-T	294-F	344-T	394-F	444-T	
45-F	95-T	145-T	195-F	245-T	295-T	345-F	395-T	445-T	
46-F	96-T	146-T	196-F	246-F	296-T	346-T	396-T	446-F	
47-F	97-F	147-F	197-T	247-T	297-F	347-F	397-T	447-T	
48-F	98-T	148-T	198-F	248-F	298-T	348-T	398-F	448-F	
49-F	99-T	149-T	199-F	249-F	299-F	349-F	399-T	449-F	
50-T	100-T	150-F	200-T	250-T	300-F	350-F	400-T	450-F	